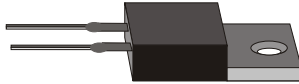


MUR1605 THRU MUR16100

16.0 AMP SUPER FAST RECTIFIERS



FEATURES

- * Low forward voltage drop
- * High current capability
- * High reliability
- * High surge current capability
- * Good for switching mode application

MECHANICAL DATA

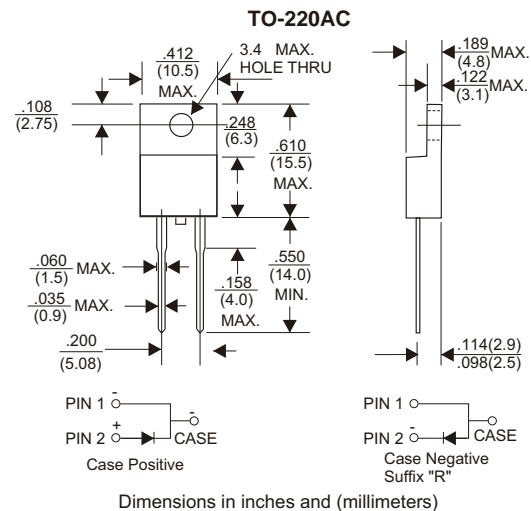
- * Case: Molded plastic
- * Epoxy: UL 94V-0 rate flame retardant
- * Lead: Lead solderable per MIL-STD-202, method 208 guaranteed
- * Polarity: As Marked
- * Mounting position: Any

VOLTAGE RANGE

50 to 1000 Volts

CURRENT

16.0 Amperes



MAXIMUM RATINGS AND ELECTRICAL CHARACTERISTICS

Rating 25°C ambient temperature unless otherwise specified.
Single phase half wave, 60Hz, resistive or inductive load.
For capacitive load, derate current by 20%.

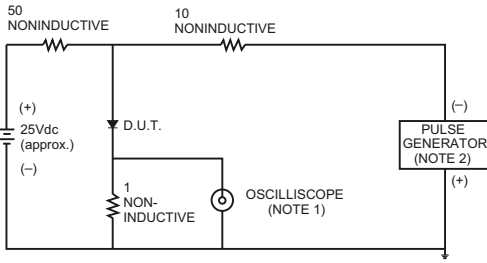
| TYPE NUMBER | MUR1605 | MUR1610 | MUR1620 | MUR1630 | MUR1640 | MUR1660 | MUR1680 | MUR16100 | UNITS |
|---|------------|---------|---------|---------|---------|---------|---------|----------|-------|
| Maximum Recurrent Peak Reverse Voltage | 50 | 100 | 200 | 300 | 400 | 600 | 800 | 1000 | V |
| Maximum RMS Voltage | 35 | 70 | 140 | 210 | 280 | 420 | 560 | 700 | V |
| Maximum DC Blocking Voltage | 50 | 100 | 200 | 300 | 400 | 600 | 800 | 1000 | V |
| Maximum Average Forward Rectified Current .375"(9.5mm) Lead Length at Ta=50°C | 16.0 | | | | | | | | A |
| Peak Forward Surge Current, 8.3 ms single half sine-wave superimposed on rated load (JEDEC method) | 200 | | | | | | | | A |
| Maximum Instantaneous Forward Voltage at 16.0A | 1.0 | | 1.3 | | 1.75 | | | | V |
| Maximum DC Reverse Current Ta=25°C | 10 | | | | | | | | µA |
| at Rated DC Blocking Voltage Ta=100°C | 400 | | | | | | | | µA |
| Maximum Reverse Recovery Time (Note 1) | 50 | | | | | | | | nS |
| Typical Junction Capacitance (Note 2) | 90 | | | | | | | | pF |
| Operating and Storage Temperature Range Tj, Tstg | -65 — +150 | | | | | | | | °C |

NOTES:

- Reverse Recovery Time test condition: IF=0.5A, IR=1.0A, IRR=0.25A
- Measured at 1MHz and applied reverse voltage of 4.0V D.C.

RATING AND CHARACTERISTIC CURVES (MUR1605 THRU MUR16100)

FIG.1- TEST CIRCUIT DIAGRAM AND REVERSE RECOVERY TIME CHARACTERISTIC



NOTES: 1. Rise Time= 7ns max., Input Impedance= 1 megohm, 22pF.
2. Rise Time= 10ns max., Source Impedance= 50 ohms.

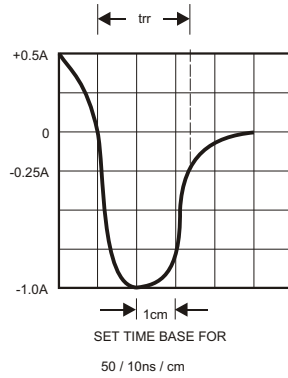


FIG.2-TYPICAL FORWARD CURRENT DERATING CURVE

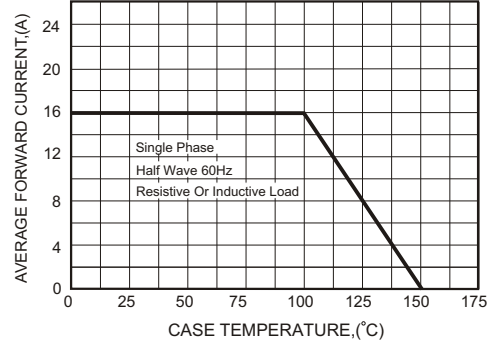


FIG.3-TYPICAL FORWARD CHARACTERISTICS

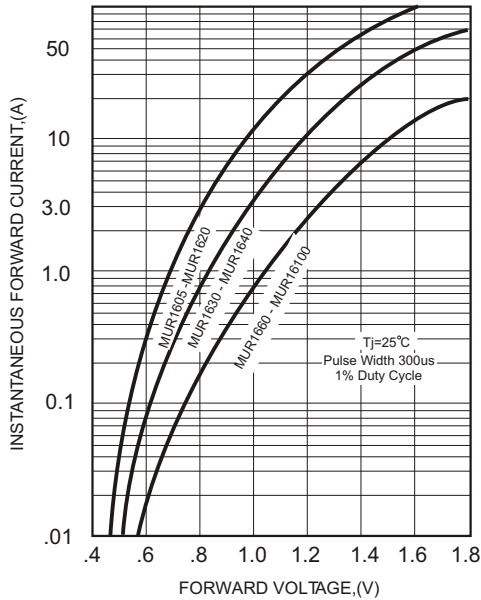


FIG.4-TYPICAL REVERSE CHARACTERISTICS

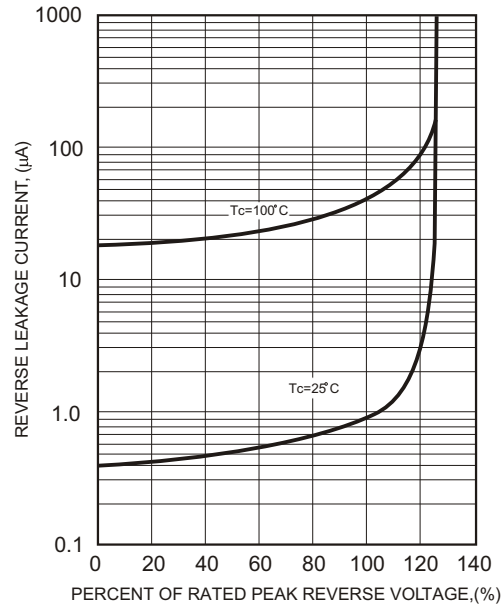


FIG.5-MAXIMUM NON-REPETITIVE FORWARD SURGE CURRENT

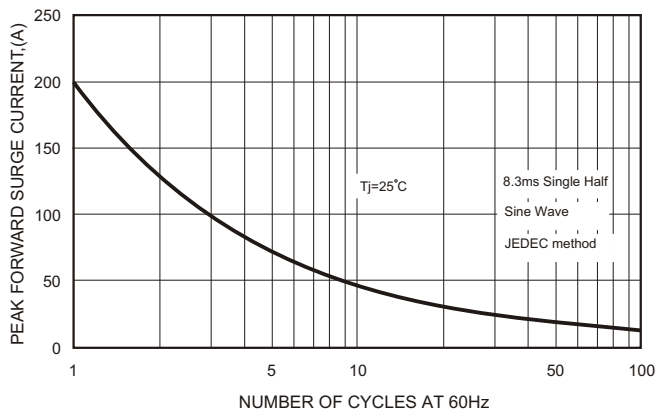


FIG.6-TYPICAL JUNCTION CAPACITANCE

